

TWO NEW SUBGENERA AND THREE NEW SPECIES OF *POLANA* (HOMOPTERA: CICADELLIDAE) FROM PERU AND COLUMBIA¹

Dwight M. DeLong²

ABSTRACT: Two new subgenera, *Polana* subgenus *Striapona* and subgenus *Validapona*, and three new species, *P. (Striapona) desela* n. sp. (Peru), *P. (Validapona) lamina* n. sp. (Colombia) and *P. (Nihilana) quadrina* n. sp. (Colombia), are described.

The genus *Polana* was described by DeLong (1942). A synopsis of *Polana* treating 87 species was published by DeLong and Freytag (1972). Two additional species have been described by DeLong and Wolda (1978). Two new subgenera and three new species are described at this time.

Subgenus *Striapona*, n. subgen.

Type-Species *Polana (Striapona) desela*, n. sp.

Crown produced, apex bluntly, roundly, angled margin thick, bluntly angled with front. Ocelli nearer anterior than posterior margin of crown and closer to eyes than to median line. Crown depressed behind thick anterior margin. Coronal margin, entire crown and central portion of pronotum marked with conspicuous, often deeply cut, transverse striae. Basal processes of male aedeagus quite broad.

The subgenus *Striapona* is closely related to the subgenus *Bohemanella* but the head is entirely different, crown more produced, with thicker margin and aedeagal processes different.

Polana (Striapona) desela, n. sp.
(Figs. 1-6)

Length of male 10mm, female unknown. Crown produced and rounded, twice as wide between eyes at base as median length. Ocelli nearer anterior than posterior margin and nearer to proximal eye than to median line. Crown depressed behind thick margin, bluntly angled with front. Coronal margin, entire crown and median portion of crown, especially disc, marked with conspicuous, often deep transverse striae. Color, face dark brown; crown dark brown to black. Pronotum pale brown, basal margin black, a large oval spot on disc dark brown, opaque, veins scarcely visible.

Genitalia of male with plates two and one-half times as long as median width, apices bluntly angled. Style with blade slightly narrowed on ventral margin near base, apex narrow and slightly recurved at tip. Aedeagal shaft rather short and robust, apex curved ventrally, tip rounded; basal processes rather broad, extending to apex of aedeagal shaft, apices in ventral view bluntly angled. Pygofer with caudal margin broad, rounded.

Holotype male, Iquitos Peru, XI., 1920 in the DeLong Collection.

¹Received April 30, 1979.

²Department of Entomology, The Ohio State University.

Subgenus *Validapona*, n. subgen.**Type-species *Polana (Validapona) lamina*, n. sp.**

Head narrow, crown broadly rounded, almost parallel margined, scarcely produced, twice as broad at base between eyes as median length. Ocelli slightly nearer anterior than posterior margin of crown, twice as distant from median line as from proximal eye. Margin thick, but not rounded, dorsally as in *Polana*. Apical portion of aedeagal shaft with broad laminae extending laterally, aedeagus without basal processes. Pygofer with a long spear-like process, arising at base, extending ventrally, then caudally, along ventral margin to apex of pygofer.

Validapona is intermediate between *Curtara* and *Polana*. Viewed from above it appears related to *Curtara*; and from a lateral view, it appears as a *Polana*. The narrow head is more like species of *Polana*.

***Polana (Validapona) lamina*, n. sp.
(Figs. 7-12)**

Length of male 13 mm, female unknown. Crown broad, rounded, almost parallel margined, twice as wide between eyes at base as median length. Ocelli closer to eyes than to median line. Crown without definite margin. Color crown pale, brown, darker brown at center. Pronotum pale brown with darker brown spots across basal area, a dark brown area on disc and apical margin dark brown. Scutellum brown with darker brown angles. Forewings white, heavily mottled with dark brown spots, veins brown.

Male genitalia with plates four times as long as median width, apices rounded. Style with apical portion of blade narrowed and curled. Aedeagal shaft narrowed, blunt at apex with thin sclerotized plates extending laterally from apical portion of shaft. Continuous plate on apical third of ventral surface; two dorsal plates extend laterally from dorsal surface. Pygofer tapered and bluntly angled at apex, long slender sclerotized process arising on cephalad margin each side, extending ventrally then caudally beyond apex of pygofer.

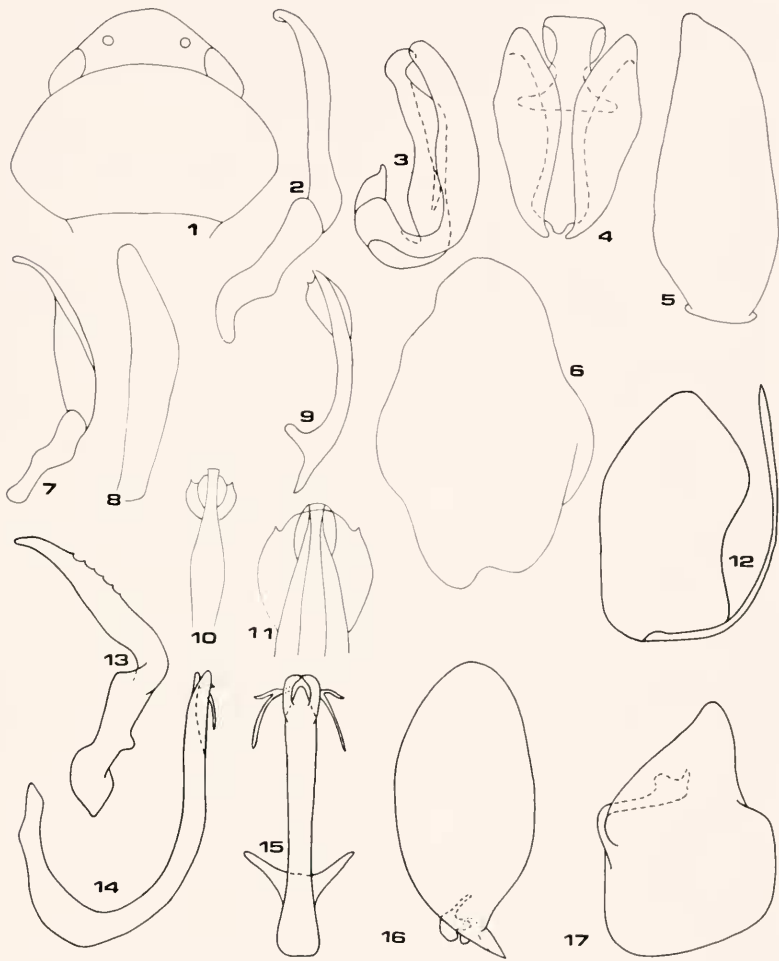
Holotype male, Colombia, Choco Dept., Camp Teresita, April 1967, in the DeLong Collection.

***Polana (Nihilana) quadrina*, n. sp.
(Figs. 13-17)**

Length of male 9.5 mm., female unknown. Crown more than twice as wide between eyes at base than median length. Ocelli closer to eyes than to median line and closer to anterior margin than to base of crown. Color, clypeus and postclypeus pale brown. Crown, pronotum, and scutellum pale brown, caudal portion of pronotum and basal angles of scutellum darker brown. Forewings brown with two transverse rows, of 4 spots each, across wings. First row across middle of clavus with two spots on commissure and one spot on anterior portion of each discal cell. Second row across apex of clavus with two spots on commissure and one on caudal cross vein of each discal cell; veins brown.

Male plates broad, twice as long as median width, apices narrow and rounded. Style gradually narrowing from one-third its length to a narrow, bluntly pointed, dorsally curved apex; blade serrate on ventral margin of median third. Aedeagal shaft bluntly pointed at apex with two blunt subapical portions curving and contiguous beyond apex. A bifid lateral process arising from each subapical process curving laterad and basad. Each lateral process bifid near base; caudad portion one-fourth length of basad portion and extending laterally; basal portion extending basad. Pygofer with a spine-like process arising dorsally, extending basad more than half width of pygofer, subapically enlarged, apex narrow, pointed.

Holotype male labeled "Colombia, 1941 (L. Richter)" in the North Carolina State University collection.



Figs. 1-6 *Polana (Striapona) desela*, n.sp. 1. head and pronotum dorsally, 2. style laterally, 3. aedeagus laterally, 4. aedeagus ventrally, 5. plate ventrally, 6. pygofer laterally. Figs. 7-12. *Polana (Validapona) lamina*, n.sp. 7. style laterally, 8. plate ventrally, 9. aedeagus laterally, 10. aedeagus ventrally, 11. aedeagus ventrally, apical portion, 12. pygofer laterally. Figs. 13-17. *Polana (Nihilana) quadrina*, n.sp. 13. style laterally, 14. aedeagus laterally, 15. aedeagus ventrally, 16. plate ventrally, 17. pygofer laterally.

P. quadrina is related to *P. concinna* (Stal). These can be separated by the characters of the style and aedeagus as illustrated.

LITERATURE CITED

- DeLong, Dwight M. 1942. A Monographic Study of the North American Species of the Subfamily Gyponinae (Homoptera: Cicadellidae) exclusive of *Xerophloea*. Ohio State University, Graduate School Studies, Contrib. Zool., Entomol.No. 5. Biol. Series XIV 187: 35 pls.
- _____ and Paul H. Freytag, 1972, Studies of the World Gyponinae (Homoptera: Cicadellidae) The Genus *Polana* Arq. Zool. S. Paulo. 22(5):239-324.
- _____ and Henk Wolda 1978, New Species of *Polana* and *Curtara* (Gyponinae - Homoptera: Cicadellidae) from Panama. Ent. News 89: (9 & 10):227-230.

INTERNATIONAL COMMISSION ON ZOOLOGICAL NOMENCLATURE

The Commission hereby gives six months notice of the possible use of its plenary powers in the following cases, published in *Bull. Zool. Nom.* vol. 35, part 4, May 31, 1979 and vol. 36, part 1, July 1, 1979 and will welcome comments and advice on them from interested zoologists. Correspondence should be addressed to the Secretary, I.C.Z.N., c/o British Museum (Natural History), Cromwell Road, London, SW7 5BD, United Kingdom.

- 2161 *Lethocerus* Mayr, 1853 (Homoptera, Belostomatidae); proposed conservation in place of *Iliastus* Gistel (1847).
- 2234 *Lespesia* Robineau-Desvoidy, 1863; proposed designation of a type species under the plenary powers (Diptera, Tachinidae).
- 2255 *Tipula ferruginea* Fabricius, 1805 (Diptera, Tipulidae); proposed conservation.
- 2221 "*Staphylinus fulgidus*" as the type species of several nominal genera (Coleoptera, Staphylinidae).

The following options have been published recently by the I.C.Z.N. in the same above issues of the *Bull, Zool. Nom.* The Commission regrets it can not supply separates of Opinions.

- 1118 (p. 212) Conservation of *Tribolbina carnegiei* Latham, 1932, (Acarchnida)
- 1119 (p. 216) *Amaurobisu* C.L. Koch, 1837, and *Coelotes* Blackwell, 1841 (Araneae); conserved under the plenary powers.
- 1120 (P 221) *Noctua armigera* Hubner, (1808) (Lepidoptera) conserved.
- 1125 (p. 22) *Ceratophyllus soricis* Dale, 1878. (Insecta: Siphonaptera); designation of a neotype under the plenary powers.